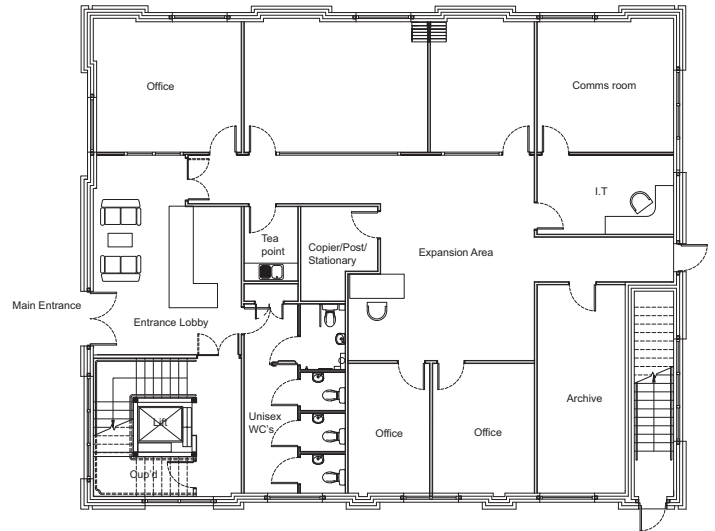


Unit2A Ground Floor



Whitstable Road

Faversham 50,000 sq ft



One of Kent's Best Located Office Developments.

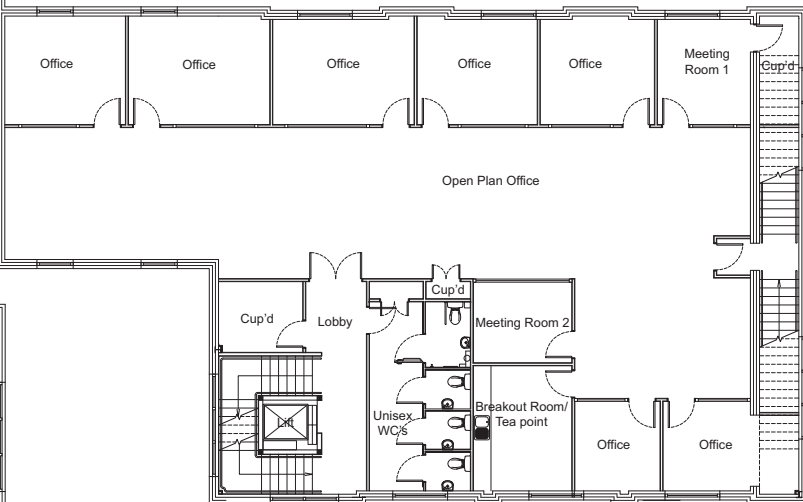
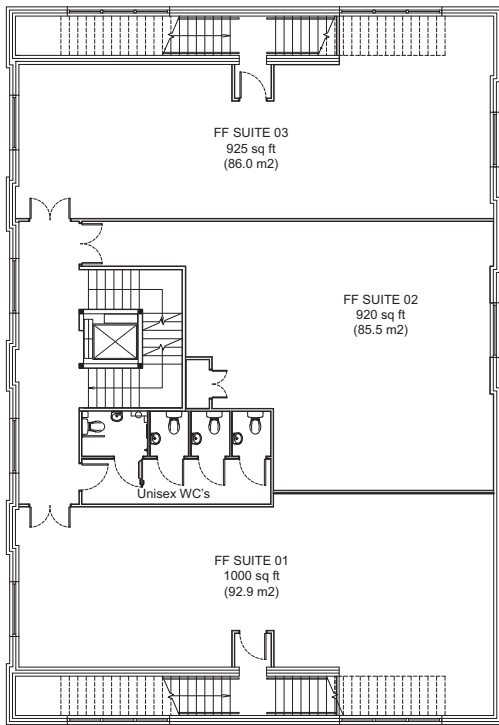
Prime Locations with Excellent Motorway Connections.



Unit2A First Floor

George Wilson Holdings Ltd, as a substantial commercial property developer, is proud of its numerous projects in north and east Kent.

The group has been established in this region for over 25 years, creating in excess of 1,000,000 sq ft (92,902 m²) of quality floor space, encompassing grade A office accommodation and a variety of industrial units ranging in size from 1000 - 100,000 sq ft (92.9 - 9290 m²).



Unit2A Second Floor

